



Reed Surface Mount XL

The Reed Surface Mount XL, gives you the option of creating Xtra Long lengths up to 100"! Choose our standard base with a knife edge flange that blends into ceilings OR a mudring that creates a clean flangeless look. With the 1300 Xicato lumen LED module, the Reed Surface Mount XL can provide great illumination AND great design. Create custom sizes from 25" to 100". This fixture easily mounts to a 4"x2" octagonal j-box. The body comes in classic matte finishes as well as satin and gloss powder coat colors. Add an HLO drop lens if you want some extra sparkle.

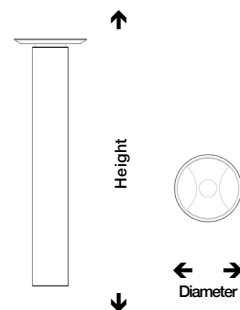


SPECIFICATIONS

LEDs	2700K, 3000K, 3500K or 4000K; 80+ or 98 CRI Xicato
Power Requirements	120-277 VAC input voltage
Dimming	0-10V, ELV, 1%, 0% and DMX with certified power supplies
Sustainably Made	RoHS compliant materials and manufacturing
Construction	Anodized aluminum, stainless steel
Installation	Flat base covers standard 4" octagonal junction boxes Optional deep canopy to cover 4" j-box OR mudring for a flangeless appearance
Finish	Polished, brushed or matte anodized body and powder coat finishes
Certifications	ETL for damp locations
Warranty	Five year limited warranty; other warranties may also apply

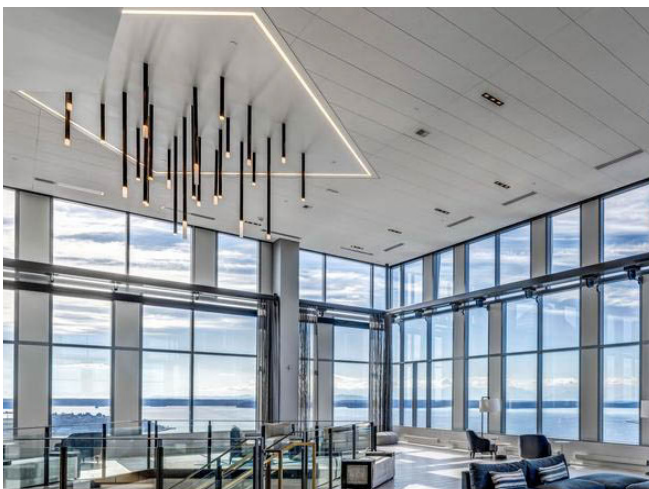


MODELS	Lumens	Watts
	1000	7 @ 80 CRI; 10 @ 98 CRI
	1300	10 @ 80 CRI; 14 @ 98 CRI



Dimensions
XX" x 2.25" diameter
heights 25" to 100"

Reed Surface Mount XL





ORDER GUIDE

Reed Surface Mount XL

Reed Surface Mount XL [LRD.SMXL]

Size

CXX "h [.XX] custom height available 25" to 100"

LED Color Temperature

2700°K [.27] 3000°K [.30] 3500°K [.35] 4000°K [.40]

Lumens

1000 lumens, 80+ CRI [.10] 1000 lumens, 98 CRI [.10A]
 1300 lumens, 80+ CRI [.13] 1300 lumens, 98 CRI [.13A]

Finish

Standard Powder Coat

Black Satin [.BKS] Black Gloss [.BKG]
 White Satin [.WHS] White Gloss [.WHG]
 Silver Satin [.SL] Bronze [.BRP]
 Red Pepper [.RD] Tangerine [.OR]
 Lime Green [.LG]

Premium Additional cost for Premium Finishes

Silver Polished Anodized [.SLS]
 Gold Matte Anodized [.GL] *interior only, 70" max*
 Brushed Silver Anodized [.BRSL]
 Brushed Gold Anodized [.BRGL] *interior only, 70" max*
 Brushed Black Anodized [.BRBK] *interior only, 70" max*
 Custom RAL Powder coat [.C+RAL]

HLO Drop Lens Length (optional)

1" HLO [.H1] 3" HLO [.H3] 6" HLO [.H6] 12" HLO [.H12]

Optics

40° beam reflector [.40] 60° beam reflector [.60]

Ceiling Options

All Surface Mount Pendants come with a flange that covers a j-box opening 4 1/8" diameter

Flat Base (color matched to fixture) [-M] White Flat Base [-W]
 Mudring [- MR] *for a flangeless appearance* Black Flat Base [-B]
 White Deep Canopy No Holes [- DCNW] Black Deep Canopy No Holes [- DCNB]
 White Deep Canopy 1 Mouse Hole [- DC1W] Black Deep Canopy 1 Mouse Hole [- DC1B]
 White Deep Canopy 2 Mouse Holes [- DC2W] Black Deep Canopy 2 Mouse Holes [- DC2B]
 Custom RAL Powder coat (*additional cost*) [-DCNC+RAL#, -DC1C+RAL#, -DC2C+RAL#]

NOTE: Deep canopy to cover j-box. 5"diameter x 1.4"h. Mouse holes to accommodate conduit.

White and black options are powder coated with a Satin (semi-matte) finish, unless a gloss finish is requested for the flange.

Flange can have a different color than the body. Please indicate if a different flange color is required

The following exceptions apply:

Flat Base - matched to fixture [-M]

SLS, BRSL = Silver Satin powder coat base

GL, BRGL = Gold matte anodized base

BRBK = Black satin powder coat base

PRODUCT NUMBER INFO

model size light color + lumens finish HLO size + optics (optional) ceiling options

LRD.SMXL

CXX = XX"h 27 = 2700K 10 = 1000 lumens 80+CRI
height 25" 30 = 3000K 10A= 1000 lumens 98 CRI
to 100" 35 = 3500K 13 = 1300 lumens 80+ CRI
 40 = 4000K 13A = 1300 lumens 98 CRI

BKS = Black Satin
BKG = Black Gloss
WHG = White Gloss
see Order Guide for more options

H1 = 1" HLO 40 = 40°
H3 = 3" HLO 60 = 60°
H6 = 6" HLO
H12 = 12" HLO

Blank = Standard
MR = Mudring
see Order Guide for more options

Driver Options **REQUIRED**

** Optional - Can be installed in a remote location*

0-10V @ 10 % Dimming - fits in a 4"x2" octagonal j-box* ELV @ 10 % Dimming - fits in a 4"x2" octagonal j-box*
 0-10V @ 1% Dimming - EldoLED ECODrive *remote only* DMX Dimming - call for spec *remote only*
 0-10V @ 0% Dimming - EldoLED SOLOdrive *remote only* Emergency Driver - EM *in addition to driver selection*
 0-10V @ 1% Dimming - Lutron ECOsystem *remote only*

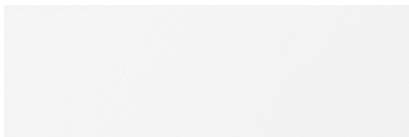
Standard Powder Coat



Black Satin [.BKS]



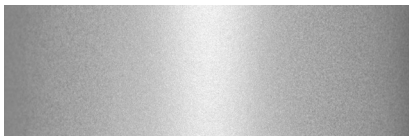
Black Gloss [.BKG]



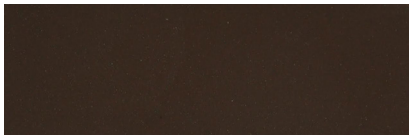
White Satin [.WHS]



White Gloss [.WHG]



Silver Satin [.SL]



Bronze [.BRP]



Red Pepper [.RD]



Tangerine [.OR]



Lime Green [.LG]

Custom Powder Coat



Custom Color
[.CC + RAL]

Premium Powder Coat



Mustard Seed [.MS]

Premium Anodized



Black Matte [.BK]
interior use only



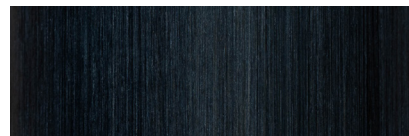
Polished Silver [.SLS]



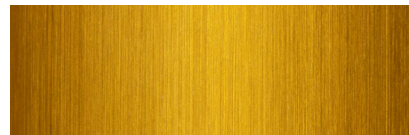
Polished Gold [.GLS]
interior use only



Gold Matte [.GL]
interior use only



Brushed Black [.BRBK]
interior use only



Brushed Gold [.BRGL]
interior use only



Brushed Silver [.BRSL]

CorTen-ish



CorTen-ish [.CT]
interior use only

**Not all finishes available for all fixtures.
See Spec Sheet for specific available finishes.**