



Tule-Q Pendant

The Tule-Q Pendant is the perfect solution for providing general illumination in open-to-structure environments, corridors and common areas. Budget friendly. Quality construction and light output. Available with either 1300 or 2000 lumens, 3000K or 3500K. Choose from Black or White Satin powder coat colors. Competitively-priced and Quick to Ship. That's the Q in the Tule-Q!

Made in USA.



SPECIFICATIONS

- LEDs** 3000 K or 3500K; 80+ CRI Xicato
- Power Requirements** 120-277 VAC input voltage
- Dimming** 0-10v, 10% dimming with certified power supplies
- Sustainably Made** RoHS compliant materials and manufacturing
- Construction** anodized aluminum, stainless steel
- Installation** Ceiling canopy 5" diameter x .25"h covers standard junction boxes
Integral structural & electrical cord is standard; rigid stem options available
- Finish** White Satin or Black Satin powder coat
- Certifications** ETL for damp locations
- Warranty** Five year limited warranty; other warranties may also apply
- Shipping** Ships in 2-4 weeks

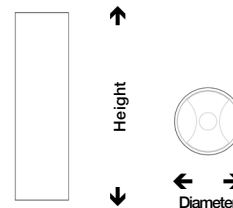


MODELS

Lumens	Watts
1300	10 @ 80 CRI
2000	16 @ 80 CRI

Dimensions

10"h x 4" diameter





ORDER GUIDE

Tule-Q Pendant

Tule Pendant [LTL.PN . . . -Q]

Size

10" h x 4"d [.10]

LED Color Temperature

3000°K [.30] 3500°K [.35]

Lumens

1300 lumens, 80+ CRI [.13] 2000 lumens, 80+ CRI [.20]

Finish

Black Satin powder coat [.BKS] White Satin powder coat [.WHS]

Optics

40° beam reflector [.40] 60° beam reflector [.60]

Cord & Canopy

All pendants come with a 6' integrated structural & electrical cord, and 5"d x .25"h disc canopy

White Canopy & Clear cord [.WC] Black Canopy & Black cord [.BB]

PRODUCT NUMBER INFO

model	size	light color + lumens		finish	optics	canopy & cord
LTL.PN	<input type="text" value="10"/>					
	10 = 10"h	30 = 3000K 35 = 3500K	13 = 1300 lumens, 80+CRI 20 = 2000 lumens, 80+CRI	BKS = Black Satin WHS = White Satin	40 = 40° beam 60 = 60° beam	WC = White canopy & clear cord BB = Black canopy & black cord

Driver (included)

0-10V @ 10 % Dimming - fits in a 4"x2" octagonal j-box*

Emergency Driver - EM *in addition to driver selection*

* Optional - Can be installed in a remote location

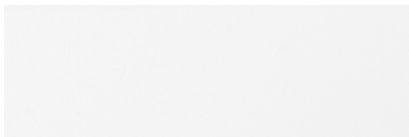
Standard Powder Coat



Black Satin [.BKS]



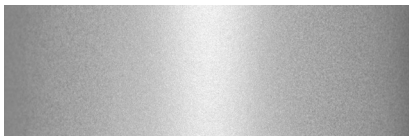
Black Gloss [.BKG]



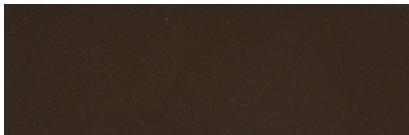
White Satin [.WHS]



White Gloss [.WHG]



Silver Satin [.SL]



Bronze [.BRP]



Red Pepper [.RD]



Tangerine [.OR]



Lime Green [.LG]

Custom Powder Coat



Custom Color
[.CC + RAL]

*Not all finishes available for all fixtures.
See Spec Sheet for specific available finishes.*

Premium Powder Coat



Matte Black [.MBK]



Mustard Seed [.MS]

Premium Anodized



Black Matte [.BK]
interior use only



Polished Silver [.SLS]



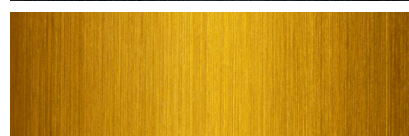
Polished Gold [.GLS]
interior use only



Gold Matte [.GL]
interior use only



Brushed Black [.BRBK]
interior use only



Brushed Gold [.BRGL]
interior use only



Brushed Silver [.BRSL]

CorTen-ish



CorTen-ish [.CT]
interior use only



Reed-Q Pendant

Tall, sleek and slender, the minimalist Reed pendant features a Xicato LED that provides as much as 1300 lumens out of a 2.25” diameter fixture. The slender shape enables it to fit between wood slats or provide general illumination in open-to-structure ceilings. Place a series of Reeds over bars, reception and conference tables, or make a dramatic statement in high cube spaces. The body comes in beautiful polished or brushed anodized finishes, well as satin and gloss powder coat colors.

Made in USA.

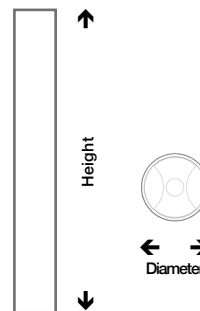


SPECIFICATIONS

- LEDs** 3000K, 3500K; 98 CRI Xicato
- Power Requirements** 120-277 VAC input voltage
- Dimming** 0-10V 10% with certified power supplies
- Sustainably Made** RoHS compliant materials and manufacturing
LBC compliant / Red List free wire available
- Construction** Anodized aluminum, stainless steel
- Installation** Round ceiling canopy 5”d x .25”h covers standard junction boxes
Integral structural & electrical cord is standard; rigid stem options
- Finish** Polished, brushed or matte anodized and powder coat finishes
- Certifications** ETL certified for damp locations
- Warranty** Five year limited warranty; other warranties may also apply



MODELS	Lumens	Watts
	1300	10 @ 80 CRI; 14 @ 98 CRI



Dimensions
6.5”h x 2.25” diameter



ORDER GUIDE

Reed-Q Pendant

Reed-Q Pendant [LRD.PN]

Size

6.5" h [.06]

LED Color Temperature

3000°K [.30] 3500°K [.35]

Lumens

1300 lumens, 80+ CRI [.13]

Finish

Black Satin powder coat [.BKS] White Satin powder coat [.WHS]

Optics

40° beam reflector [.40] 60° beam reflector [.60]

Cord & Canopy

All pendants come with a 6' integrated structural & electrical cord, and 5"d x .25"h disc canopy

White Canopy & Clear cord [.WC] Black Canopy & Black cord [.BB]

PRODUCT NUMBER INFO

model	size	light color + lumens	finish	optics	canopy & cord	
LRD.PN	06 = 6.5"h	30 = 3000K 35 = 3500K	13 = 1300 lumens, 80+ CRI	BKS = Black Satin WHS = White Satin	40 = 40° beam 60 = 60° beam	WC = White canopy & clear cord BB = Black canopy & black cord

Driver (included)

0-10V @ 10 % Dimming - fits in a 4"x2" octagonal j-box

Emergency Driver - EM *in addition to driver selection*